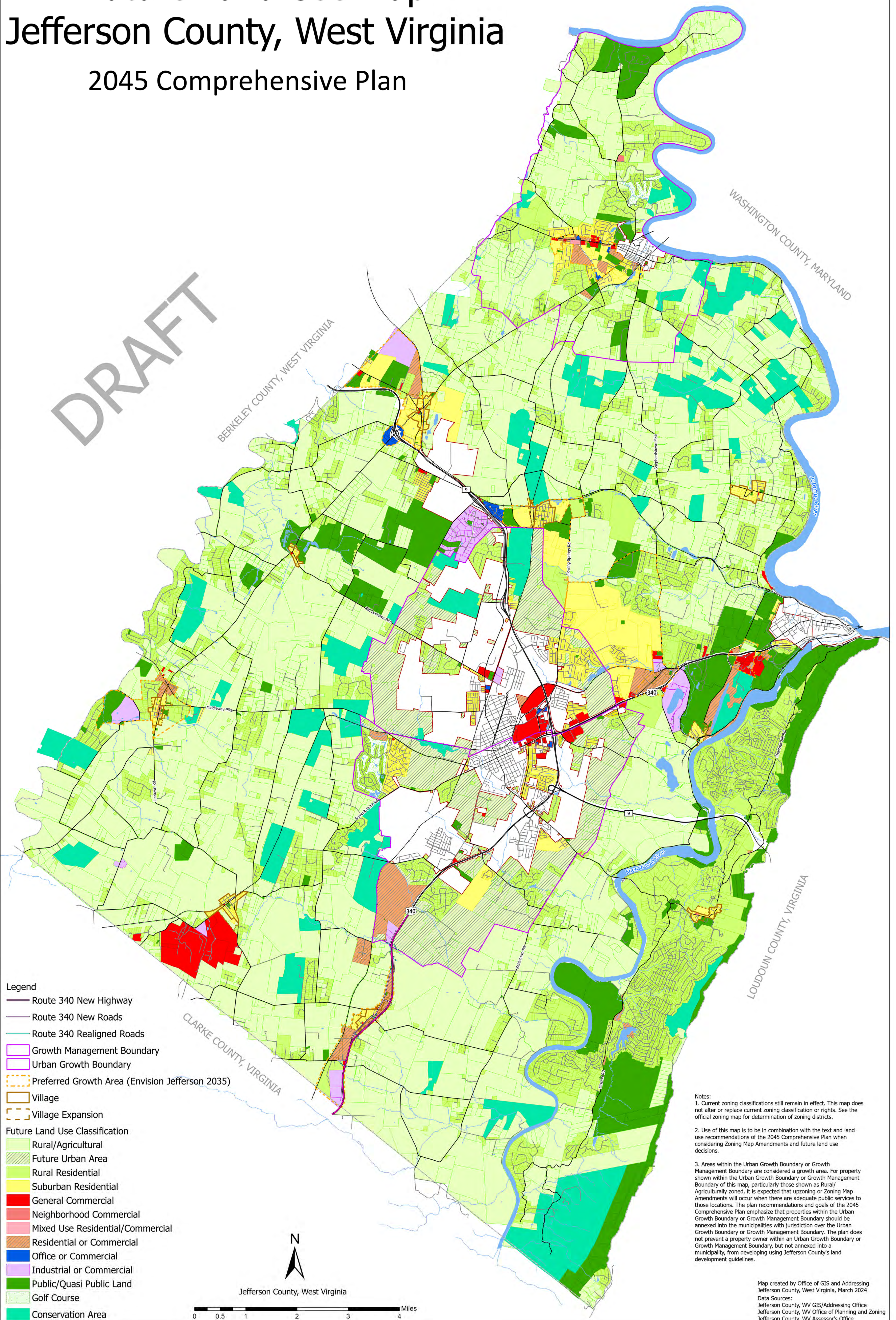


Future Land Use Map

Jefferson County, West Virginia

2045 Comprehensive Plan

DRAFT



- Legend**
- Route 340 New Highway
 - Route 340 New Roads
 - Route 340 Realigned Roads
 - Growth Management Boundary
 - Urban Growth Boundary
 - Preferred Growth Area (Envision Jefferson 2035)
 - Village
 - Village Expansion
- Future Land Use Classification**
- Rural/Agricultural
 - Future Urban Area
 - Rural Residential
 - Suburban Residential
 - General Commercial
 - Neighborhood Commercial
 - Mixed Use Residential/Commercial
 - Residential or Commercial
 - Office or Commercial
 - Industrial or Commercial
 - Public/Quasi Public Land
 - Golf Course
 - Conservation Area

Notes:

1. Current zoning classifications still remain in effect. This map does not alter or replace current zoning classification or rights. See the official zoning map for determination of zoning districts.
2. Use of this map is to be in combination with the text and land use recommendations of the 2045 Comprehensive Plan when considering Zoning Map Amendments and future land use decisions.
3. Areas within the Urban Growth Boundary or Growth Management Boundary are considered a growth area. For property shown within the Urban Growth Boundary or Growth Management Boundary of this map, particularly those shown as Rural/Agriculturally zoned, it is expected that upzoning or Zoning Map Amendments will occur when there are adequate public services to those locations. The plan recommendations and goals of the 2045 Comprehensive Plan emphasize that properties within the Urban Growth Boundary or Growth Management Boundary should be annexed into the municipalities with jurisdiction over the Urban Growth Boundary or Growth Management Boundary. The plan does not prevent a property owner within an Urban Growth Boundary or Growth Management Boundary, but not annexed into a municipality, from developing using Jefferson County's land development guidelines.



Map created by Office of GIS and Addressing
 Jefferson County, West Virginia, March 2024
 Data Sources:
 Jefferson County, WV GIS/Addressing Office
 Jefferson County, WV Office of Planning and Zoning
 Jefferson County, WV Assessor's Office

